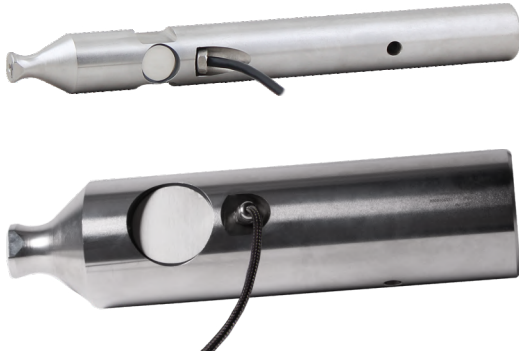


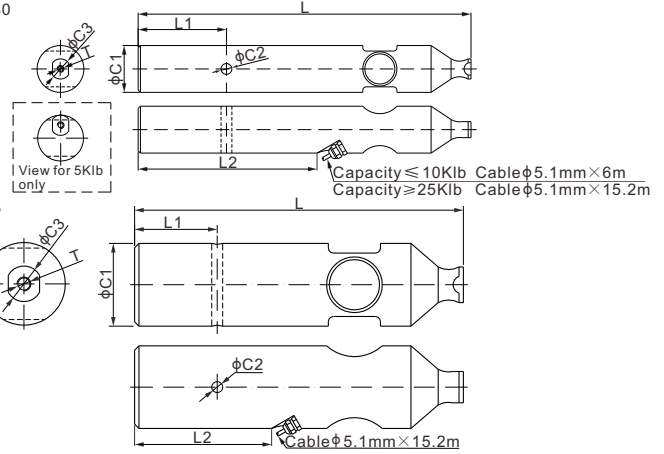
# 563WS; 563WS30

## Stainless Steel

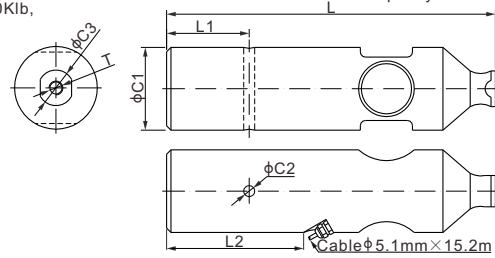
SINGLE ENDED BEAMS



563WS; 563WS30  
563WS30-CG,  
563WS30-E:



563WS30-50Klb,  
563WS30-H:



\*: NTEP or OIML: Output 3.0 mV/V only

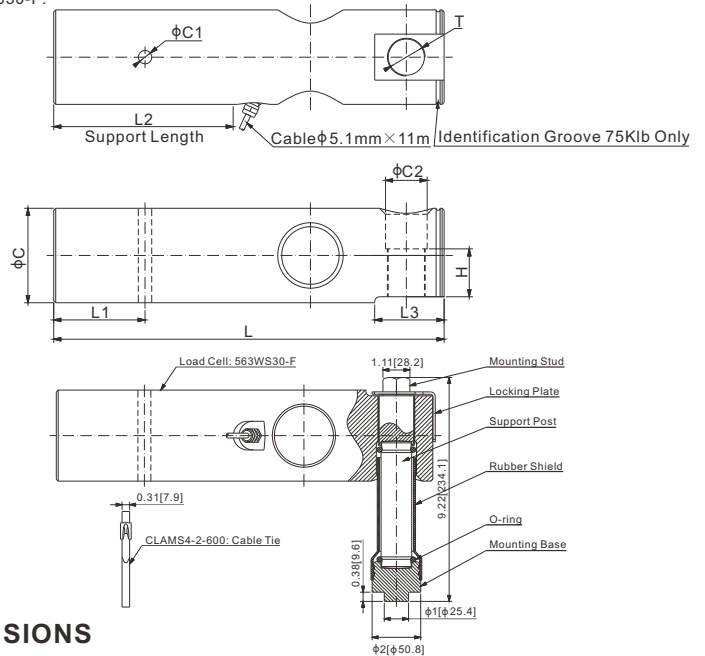
### DIMENSIONS

RATED CAPACITY	C1		C2		C3		L		L1		L2		T
	inch	mm	inch	mm	inch	mm	inch	mm	inch	mm	inch	mm	
<b>563WS:</b>													
1,250 lb	1.25	31.8	0.31	7.9	0.63	16.0	11.50	292.1	3.00	76.2	6.04	153.5	#8-32
2,500	1.62	41.1	0.37	9.4	0.70	17.8	11.50	292.1	3.00	76.2	5.59	142.0	#6-32
5,000	2.00	50.8	0.37	9.4	0.88	22.4	10.88	276.4	3.05	77.5	3.83	97.4	#8-32
10,000	2.50	63.5	0.37	9.4	0.88	22.4	12.63	320.8	3.05	77.5	4.20	106.9	#8-32
25,000	3.50	88.9	0.50	12.7	1.75	44.5	14.88	378.0	3.05	77.5	5.04	128.0	5/16-18 UNC-2B
25,000 (-CG)	3.50	88.8	0.50	12.7	1.76	44.7	14.88	378.0	3.66	93.1	7.64	194.1	5/16-18 UNC-2B
<b>563WS30:</b>													
37,500 lb	3.50	88.9	0.50	12.7	1.75	44.5	14.88	378.0	3.05	77.5	5.04	128.0	5/16-18 UNC-2B
37,500 (-CG)	3.50	88.8	0.50	12.7	1.76	44.7	14.88	378.0	3.66	93.1	7.64	194.1	5/16-18 UNC-2B
50,000	3.74	95.0	0.50	12.7	1.61	40.9	14.88	378.0	3.74	95.0	7.05	179.0	5/8-16 UNC-2B
50,000 (-E)	3.50	88.9	0.50	12.7	1.73	44.0	14.88	378.0	3.51	89.1	7.76	197.0	5/16-24 UNF-2B
50,000 (-H)	3.74	95.0	0.51	12.9	1.75	44.5	14.88	378.0	3.63	92.1	7.76	197.0	5/16-24 UNF-2B



Hardware kit (to be ordered separately)  
Part#: 563WS30-F-PARTS-A  
include:  
1 x Mounting Stud  
1 x Lock Plate  
1 x Support Post  
1 x Rubber Shield  
1 x Mounting Base  
2 x O-rings  
1 x Clamp  
(Interchangeable: Avery Weigh-Tronix Easi-Post Suspension Kit)

563WS30-F:



\*: NTEP or OIML: Output 3.0 mV/V only

### DIMENSIONS

RATED CAPACITY	C	C1		C2		L	L1	L2	L3	H	T						
563WS30-F:	inch	mm	inch	mm	inch	mm	inch	mm	inch	mm	inch	mm					
60,000-75,000 lb	3.75	95.2	0.53	13.5	1.65	42.0	15.5	393.7	3.63	92.1	7.13	181.0	2.76	70.0	1.90	48.3	1- $\frac{1}{2}$ -18 UNEF


SPECIFICATIONS			
<b>Full Scale Output</b>	563WS: 2.0 mV/V ± 1% 563WS30: 3.0 mV/V ± 1%	<b>Input Resistance</b>	563WS;563WS30(CG): 350 Ω ± 7 563WS30-F: 375 Ω ± 25
<b>Zero Balance</b>	± 0.02 mV/V	<b>Output Resistance</b>	350 Ω ± 3
<b>Non-linearity</b>	563WS;563WS30(CG): < ± 0.023% 563WS30-E(-F; -H): < ± 0.02%	<b>Recommended Excitation</b>	10V (15V Maximum)
<b>Repeatability</b>	563WS;563WS30(CG): < ± 0.023% 563WS30-E(-F; -H): < ± 0.02%	<b>Insulation Resistance</b>	>2 [50V DC] GΩ
		<b>Compensated Temperature Range</b>	-10°C to 50°C / 14°F to 122°F
<b>Hysteresis Error</b>	563WS;563WS30(CG): < ± 0.023% 563WS30-E(-F; -H): < ± 0.03%	<b>Safe Overload</b>	150% of full scale
		<b>Breaking Overload</b>	300% of full scale
<b>Creep in 30 min.</b>	563WS;563WS30(CG): < ± 0.030% 563WS30-E(-F; -H): < ± 0.03%	<b>Seal Type / IP Rating</b>	Environmentally Sealed / IP67
		<b>Cable Color Code</b>	Exc+ Red      Exc- Black Sig+ Green    Sig- White Shield Bare
<b>Element Material</b>	2Cr13 Stainless Steel		

Rated Capacity	Part Number*	Weight Approx. (lb)	INTERCHANGEABLE REFERENCE			
			Avery Weigh-Tronix	Coti-Global	Rice Lake	Rice Lake
1.25Klb**	563WS-1.25Klb-YZ**	4.85	Weigh Bar	CG-WB-SS-1.25Klb	RL75000 SS-1.25Klb	RL32011WB-L-1.25Klb
2.5Klb	563WS-2.5Klb-YZ	6.61	Weigh Bar	CG-WB-SS-2.5Klb	RL75000 SS-2.5Klb	RL32011WB-L-2.5Klb
5Klb	563WS-5Klb-YZ	13.23	Weigh Bar	CG-WB-SS-5Klb	RL75000 SS-5Klb	RL32011WB-L-5Klb
10Klb	563WS-10Klb-YZ	15.43	Weigh Bar	CG-WB-SS-10Klb		RL32011WB-L-10Klb
25Klb	563WS-25Klb-YZ	34.17	Weigh Bar			
25Klb	563WS-25Klb-YZ-CG	34.17		CG-WB-SS-25Klb		
37.5Klb	563WS30-37.5Klb-YZ-CG	40.79		CG-WB-SS-37.5Klb		
37.5Klb	563WS30-37.5Klb-YZ	40.79	Weigh Bar			
50Klb	563WS30-50Klb-YZ	46.30	Weigh Bar			
50Klb	563WS30-E-50Klb-YZ-RP	40.79	27173	CG-WB-SS-50Klb-27173		
50Klb	563WS30-H-50Klb-YZ-RP	46.30	50104	CG-WB-SS-50Klb-50104		
60Klb	563WS30-F-60Klb-YZ-RP	57.32	55829	CG-WB-SS-60Klb-55829		
75Klb	563WS30-F-75Klb-YZ-RP	57.32	AWT27-500080	CG-WB-SS-75Klb-EZPOST		

\* ATEX, FM, IECEx approved versions carry the "-Ex" suffix.

\*\* This is to replace the load cell on LP and Max Deck floor scales from Avery Weigh-Tronix.  
Check 563WS-1.25Klb-YZ-WBL if to replace Bolt-In Weigh Bar on Avery Weigh-Tronix old ProDec series.

 563WS30: 10Klb-100Klb: up to NTEP 1:10 000 Class III / IIIL, Multiple Cell

 563WS30: 9t-45t: up to OIML-CS C6, Y=25 000

For further available P/N's & specifications per NTEP/OIML classes, please contact us.

# Product Datasheet Disclaimer

## **Information Changes:**

All product specifications, statements, information, and data (collectively, the “Information”) in this catalog or made available elsewhere by ANYLOAD are subject to change. Customers must verify the applicability of the Information at the time of order placement.

## **Accuracy and Reliability:**

While all Information is believed to be accurate and reliable, it is presented without guarantee, warranty, or responsibility of any kind, expressed or implied.

## **Laboratory Conditions:**

Data listed in the datasheet is produced within controlled laboratory settings and may not be reproducible without exact replication of all metrological conditions. Users must validate that a product with the described properties is suitable for their applications.

## **Interchangeability:**

Statements of interchangeability with other manufacturers are based on ANYLOAD’s knowledge at the time of publication and are not intended to constitute any warranty concerning the substitutability of an ANYLOAD product with one made by another Manufacturer.

## **Warranty Voidance:**

Any use of the product outside of specifications or any storage or installation inconsistent with product guidance voids any warranty.

## **Intended Use:**

The information is intended for use only by customers who have the requisite experience and capability to determine the correct products for their application. ANYLOAD provides technical advice without obligation or liability for the advice given or results obtained.

## **Component Failures:**

Although ANYLOAD designs and manufactures its products to stringent quality and safety standards, isolated component failures may still occur. Applications requiring high reliability or safety should employ suitable designs or safeguards to ensure that component failure does not result in personal injury or property damage.

## **High-Risk Applications:**

Unless specifically agreed to in writing, ANYLOAD has not tested or certified its products, services, or deliverables for use in high-risk applications (e.g., medical life support, nuclear facilities, weapon systems). ANYLOAD makes no assurances that the products are suitable for high-risk uses. Under no circumstances does ANYLOAD warrant or guarantee suitability for any customer design or manufacturing process.

Contact authorized ANYLOAD personnel for special terms and conditions regarding products designed for specific safety requirements.

## **Safety Measures:**

All product-related warnings, cautions, and notes must be observed. Customers should not assume that all safety measures are indicated or that other measures may not be required.

---

## **California Proposition 65:**

**⚠ WARNING:** Some products manufactured or distributed by ANYLOAD may contain trace amounts of chemicals known to the State of California to cause cancer, birth defects, or other reproductive harm. These substances are present in minimal quantities and are typically encapsulated within our products. This warning is provided to enable you to make informed decisions as a consumer.