

563YH

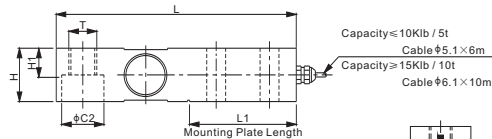
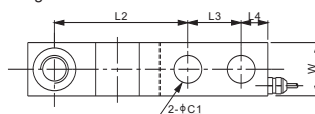
Alloy Steel



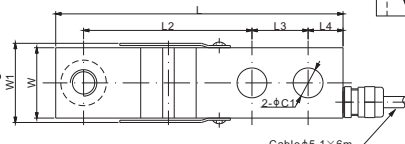
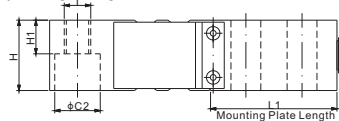
SINGLE ENDED BEAMS



Capacity: 500kg-20t / 1Klb-20Klb



Capacity: 100kg-300kg / 100lb-500lb



RATED CAPACITY	DIMENSIONS												
	C1	C2	H	H1	L	L1	L2	L3	L4	W	W1	T	
lb/inches													
100-500	0.53	0.81	1.25	0.60	5.12	2.25	3.00	1.00	0.62	1.25	1.42	1/2-20 UNF-2B	
1,000-4,000; SE5,000	0.53	0.81	1.25	0.60	5.12	2.25	3.00	1.00	0.62	1.25	-	1/2-20 UNF-2B	
5,000-10,000	0.78	1.19	1.50	0.75	6.75	3.00	3.75	1.50	0.75	1.50	-	3/4-16 UNF-2B	
15,000-20,000	1.03	1.81	2.00	1.00	8.75	4.00	4.75	2.00	1.00	2.00	-	1-14 UNS-2B	
kg/mm													
100-300	13.5	20.6	31.8	15.2	130.0	57.2	76.2	25.4	15.8	31.8	36.0	M12X1.75	
500-2,000	13.5	20.6	31.8	15.2	130.0	57.2	76.2	25.4	15.8	31.8	-	M12X1.75	
2,500; 3,000; 5,000	19.8	30.2	38.1	19.1	171.5	76.2	95.3	38.1	19.1	38.1	-	M18X1.50	
10,000	26.2	46.0	50.8	25.4	222.3	101.6	120.7	50.8	25.4	50.8	-	M24X2.00	
20,000	30.2	50.0	58.0	32.0	241.5	110.0	132.0	55.0	27.5	58.0	-	M36X2.00	

SPECIFICATIONS			
Full Scale Output	3.0 mV/V ± 0.25%	Recommended Excitation	10V (15V Maximum)
Zero Balance	± 0.02 mV/V	Insulation Resistance	>2 [50V DC] GΩ
Non-linearity	< ± 0.017%	Compensated Temperature Range	-10°C to 50°C / 14°F to 122°F
Repeatability	< ± 0.017%	Safe Overload	150% of full scale
Hysteresis Error	< ± 0.017%	Breaking Overload	300% of full scale
Creep in 30 min.	< ± 0.023%	Seal Type / IP Rating	Cap. ≤ 300kg/500lb: Environmentally Sealed / IP66 Cap. ≥ 500kg/1Klb: Environmentally Sealed / IP67
Input Resistance	400Ω ± 20 for kg; 350Ω ± 7 for lb	Cable Color Code	Exc+ Red Exc- Black Sig+ Green Sig- White Shield Bare
Output Resistance	350Ω ± 3		
Element Material	Alloy Steel, Nickel Plated		

PART NUMBER*		
Rated Capacity	Part No.	Weight (kg) Approx.
100lb	563YH-100lb	1.0
250lb	563YH-250lb	1.0
500lb	563YH-500lb	1.0
1Klb	563YH-1Klb	1.0
1.5Klb	563YH-1.5Klb	1.0
2Klb	563YH-2Klb	1.0
2.5Klb	563YH-2.5Klb	1.0
LE2.5Klb	563YH-LE2.5Klb	1.7
4Klb	563YH-4Klb	1.0
SE5Klb	563YH-SE5Klb	1.0
5Klb	563YH-5Klb	1.8
10Klb	563YH-10Klb	1.8
15Klb	563YH-15Klb	4.0
20Klb	563YH-20Klb	4.0
100kg	563YH-100kg	1.0
200kg	563YH-200kg	1.0
300kg	563YH-300kg	1.0
500kg	563YH-500kg	1.0
750kg	563YH-750kg	1.0
1t	563YH-1t	1.0
1.5t	563YH-1.5t	1.0
2t	563YH-2t	1.0
2.5t	563YH-2.5t	1.8
3t	563YH-3t	1.8
5t	563YH-5t	1.8
10t	563YH-10t	4.0
20t	563YH-20t	5.6

SE refers to small envelope

WEIGH MODULE	
Model	Page
563YHM2	156
563YHM4-02	158
563YHM5	157

INTERCHANGEABLE REFERENCE	
Manufacturer	Model
CAS	BSA*
Coti Global	CG-23*
Rice Lake	RL30000*
Rice Lake	RL35023*
Vishay Celtron	SQB*
Vishay Revere Transducers	5123*
Vishay Sensortronics	65023A*
Vishay TedeA-Huntleigh	3411*

* The dimensions of C2 of interchangeable models are different:
0.53 inch for 100lb to SE5Klb, 0.78 inch for 5Klb and 10Klb, 1.03 inch for 15Klb and 20Klb

- 250lb-2.5Klb & 200kg-1t: NTEP 1:5 000 Class III, Single Cell; NTEP 1:9 500 Class III, Multiple Cell
- 4Klb-20Klb & 2t-5t: NTEP 1:6 000 Class III, Single Cell; NTEP 1:10 000 Class III, Multiple Cell
- 1Klb-5Klb & 500kg-2.5t: OIML MAA C4, Y=15 000;
- 10Klb-20Klb & 3t-10t: OIML MAA C6, Y=8 500

www.anyload.com * ATEX, FM, IECEx approved versions carry the "-Ex" suffix.

© 2023 ANYLOAD V1 dimensions and specifications subject to change without notice