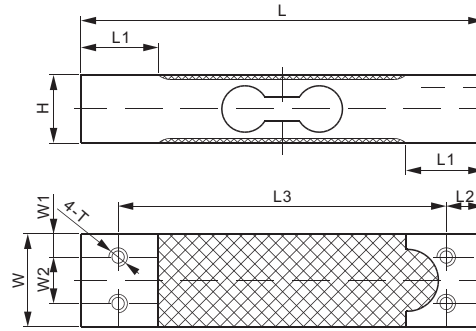
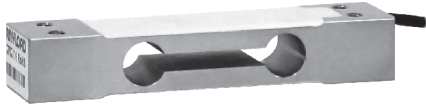


108BS



Stainless Steel



CE RoHS

DIMENSIONS

RATED CAPACITY	H	L	L1	L2	L3	W	W1	W2	T
kg/mm									
10-80	22.0	130.0	25.0	12.0	106.0	30.0	7.5	15.0	4-M6 Hole
lb/inches (conversion of above dimensions)									
22-176	0.87	5.12	0.98	0.47	4.17	1.18	0.30	0.59	4-M6 Hole

SPECIFICATIONS

Full Scale Output	2.0 ± 10% mV/V	Recommended Excitation	10V (15V Maximum)
Zero Balance	± 0.02 mV/V	Reference Max. Platform Size	400 × 400 mm
Non-linearity	< ± 0.017%	Insulation Resistance	> 2 [50V DC] GΩ
Repeatability	< ± 0.017%	Nominal Temperature Range	-10°C to 40°C / 14°F to 104°F
Hysteresis Error	< ± 0.017%	Safe Overload	150% of full scale
Creep in 30 min.	< ± 0.023%	Breaking Overload	300% of full scale
Input Resistance	385 Ω ± 15	Seal Type/ IP Rating	Environmentally Sealed / IP66
Output Resistance	350 Ω ± 3	Cable Color Code	Exc+ Red Exc- Black Sig+ Green Sig- White Shield Bare
Element Material	Stainless Steel		

PART NUMBER

Rated Capacity	Part No.	Shipping Weight (kg) Approx.
10kg	108BS-10kg	0.5
20kg	108BS-20kg	0.5
30kg	108BS-30kg	0.5
40kg	108BS-40kg	0.5
50kg	108BS-50kg	0.53
80kg	108BS-80kg	0.53

INTERCHANGEABLE PRODUCTS

Manufacturer	Model
Mettler-Toledo	SSP1022

SINGLE POINTS