

808HA Plus

Remote Display

Installation and Operation Manual



ANYLOAD

<http://www.anyload.ca>

1. Introductions

The 808HA Plus remote display features ultra-bright LED display and non-glare filtered lens for use in a wide variety of applications. The 808HA Plus is available with a 7-segment, 6-digit display, comes with 4 annunciators G (Gross), N (Net), kg, lb. It is designed to work with most digital weighing indicators by using RS-232 communications. The 808HA Plus can be easily installed by being mounted to a wall or pole, or suspended with a pair of hooks.

This manual provides installation and configuration instructions.

1.1 Standard Features

- High-intensity 4 inch red digits and annunciators (discrete LED, double row)
- Durable weather-tight enclosure
- Aluminum enclosure, IP65
- RS-232 communications
- Auto sensing 100/230 VAC power supply
- 100/240 VAC 50/60Hz power supply
- Can be connected with various weighing indicators in a wide variety of applications
- Auto-Learn for instant recognition of data stream format.
- Easy installation and easy configuration

1.2 Specifications

Display	6 digits, 7 segment discrete ultra bright red LED; 4 annunciators for G(Gross), N(Net), kg and lb.
Input interface	RS232
Input Data Format	Baud Rate: 1200, 2400, 4800, 9600; self-learning.
Mode of data transmission	Continuous
Power Supply	100/240 VAC 50/60Hz
Power Consumption	Approximately 10 watt
Enclosure Material/Rating	Aluminum, IP65
Dimensions	688mm x 194mm x 94mm
Weight	4.5 kg (10 lb)
Operating Temperature Range	-10°C to 50°C

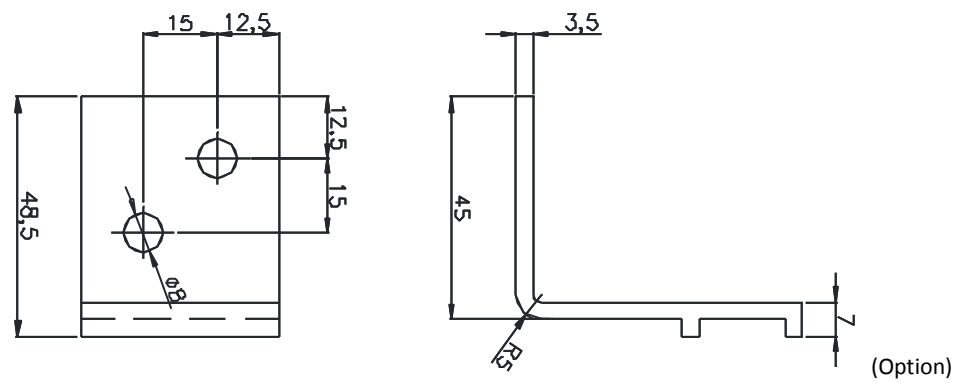
1.3 Dimensions

(in mm; 1mm = 0.03937 inches)

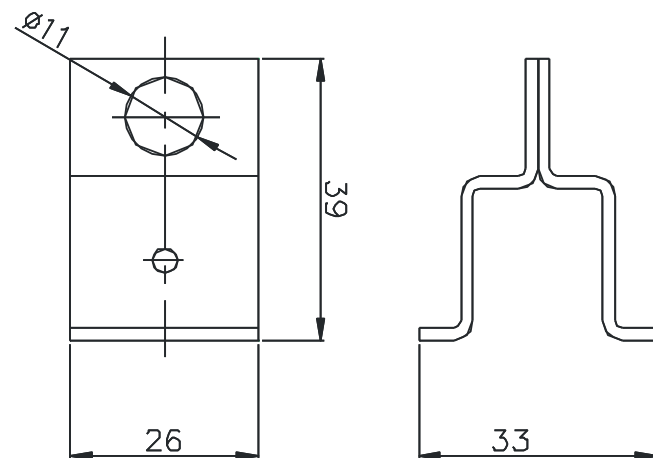
Enclosure Dimensions:



Bracket Dimensions:



Hanger Dimensions:



2. Installation and Wire Connection

2.1 Unpacking

The main components of the 808HA Plus include:

- Painted black aluminum enclosure
- AC Adapter x1
- Accessories bag: Hanger x2, screws and nuts; Bracket (wall mounting kit) x2 (Option)

After unpacking, visually check the 808HA Plus remote display for damage. If any parts were damaged in shipment, notify ANYLOAD immediately.



2.2 Wall Mounting (Option)

The 808HA Plus remote display can be mounted to any vertical surface or pole.

Use installation screws or wall anchors to secure the brackets to a wall, the bracket fits 8mm screw holes. Once the brackets are secured, make sure the enclosure is in the right slot and put the enclosure above the brackets. Double check the enclosure is installed properly before powering up the display.



2.3 Hanger Installation

The 808HA plus can also be suspended with two hooks which are at the same height, the distance between two hooks is adjustable.

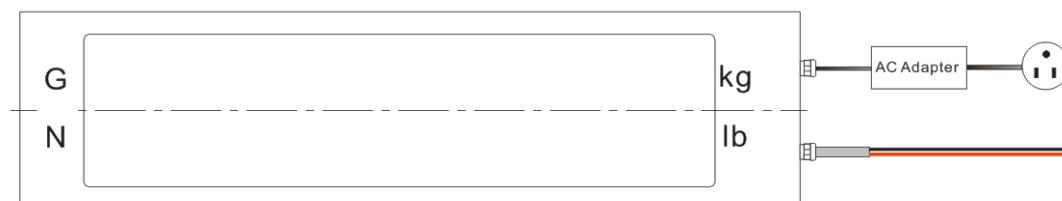
Slide the hangers into the slot, make sure the distances between two hangers and the sides of the enclosure are exactly the same so that the enclosure can be suspended horizontally. Use the screws and nuts in the accessories bag to tighten the hanger.



2.4 Wire Connection

The 808HA Plus remote display provides two cord glands located on the side of the enclosure for cabling, one for the power supply, one for serial communication.

The 808HA Plus provides RS-232 serial communications with weighing indicators. The serial communication cord is pre-wired, the **red** wire is connected to RXD of the remote display , should be connected to TXD of the indicator, the **black** wire is connected to GND of the remote display , should be connected to GND of the indicator.



3. Configuration

Once the 808HA Plus remote display is installed, it may need some easy configuration. Using Auto-Learn simplifies configuration by automatically detecting the communications format used by the indicators and eliminates the need for configuration.

3.1 Auto-Learn

The 808HA Plus remote display provides a software feature called Auto-Learn. Auto-Learn examines the serial data stream sent from the weighing indicators and attempts to determine the data settings and format used by the weighing indicators.

The 808HA Plus remote display can be connected with most weighing indicators in the market.

3.2 Mode of data transmission

The 808HA Plus remote display has the ability to receive continuous data, display digits and annunciators. Before powering up the 808HA plus remote display, make sure the mode of data transmission of the weighing indicators is set to **Continuous**.

3.3 Working Mode

When powering on the 808HA Plus remote display, it will run self-test at first. Display will show digits from six "0"s to six "9"s.

After the self-test, if the display is connected to the weighing indicator properly, it will receive the data stream sent from the indicator, and show present weighing data.

If the connection between the display and the indicator is incorrect, the display will show "-----", check the wire connection and restart the display and the indicator.

ANYLOAD

<http://www.anyload.net>

North America Toll Free: 1-855-ANYLOAD (269 5623)

Fax: +1 866 612 9088

Email: info@anyload.net

©2012 ANYLOAD. All rights reserved. Specifications are subjected to change without notice.